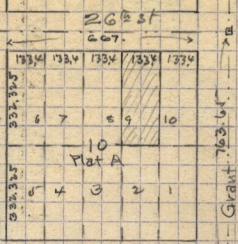


Dec. 6 - 1906 -

Survey for Otis A. White, of part of Jas. Hall, Lot. = Lot 9-13/1k. 10.

84

Plat A.



26<sup>th</sup> St  
667.

100+00

Lincoln

Grant 703.64.

27<sup>th</sup> St

92+36.30

85+38.2 Lot.

92+24.2

Blk. 10, Plat A

City Hall Sq.

84  
84+55.2

80  
84+05.6

84+05.72

84+71.1

87+16.3

87+59.

87+88.2

88+00.15

88+42.3

89+21.1

89+23.3

90+17.9

90+25.7

90+72.10

71072-Edna Wall

92+70.7

92  
42.12

94

95

96

26<sup>th</sup> St.

Lincoln Ave

86+57.37

85+50.2

86+37.1

86+38.1 Lot.

86+78.6

87+33.9

87+20.7

88+03.5

88+37.6

89+02.5

90+49 Lot

90+35.4

91+02.2

91+71.7 Lot.

Grant Ave

Blk. 10, Plat A

Plat 667

Lot = 133.4